

AWARD OF EXCELLENCE 🏆

Stamford Tent & Party Rental

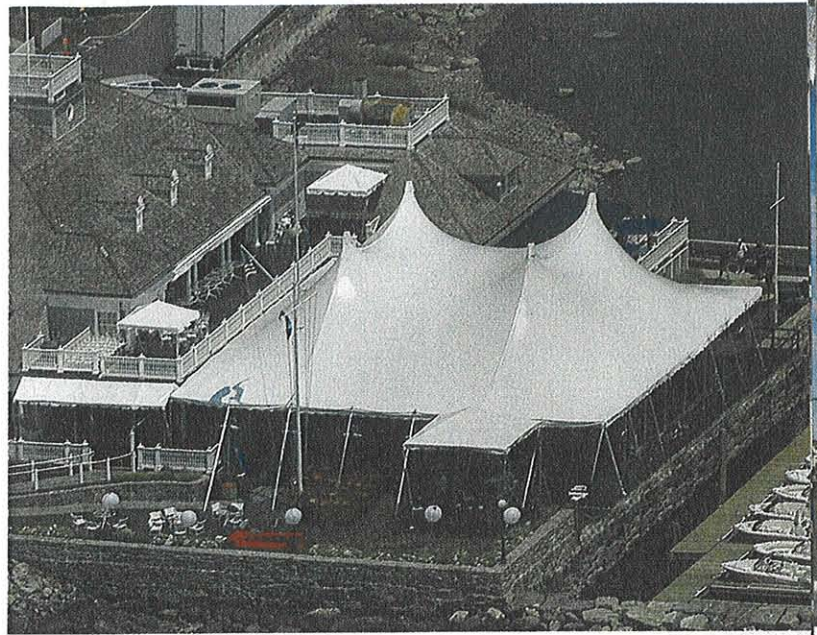
Stamford, Conn., U.S.A.

This 50th birthday party for 350 guests used an 80-by-70-foot Century tent attached to a private club and cantilevered beyond a seawall. To accommodate the necessary size tent, Stamford Tent designed a cantilevered platform that extended 8 feet beyond the seawall and attached directly to the structural steel of the building's roof. A steel outrigger system with eyebolts was cabled back to the seawall to support the platform. Four points that were not able to be cabled were secured with 8-by-8-inch steel columns bolted through the existing deck directly into the foundation of the clubhouse. Permanent eyebolts were installed directly into a subsurface concrete grade beam that was poured one week prior to the event.

FABRIC Century™ by Anchor Industries

ENGINEER Risoli Engineering

FABRICATION Eastern Metal



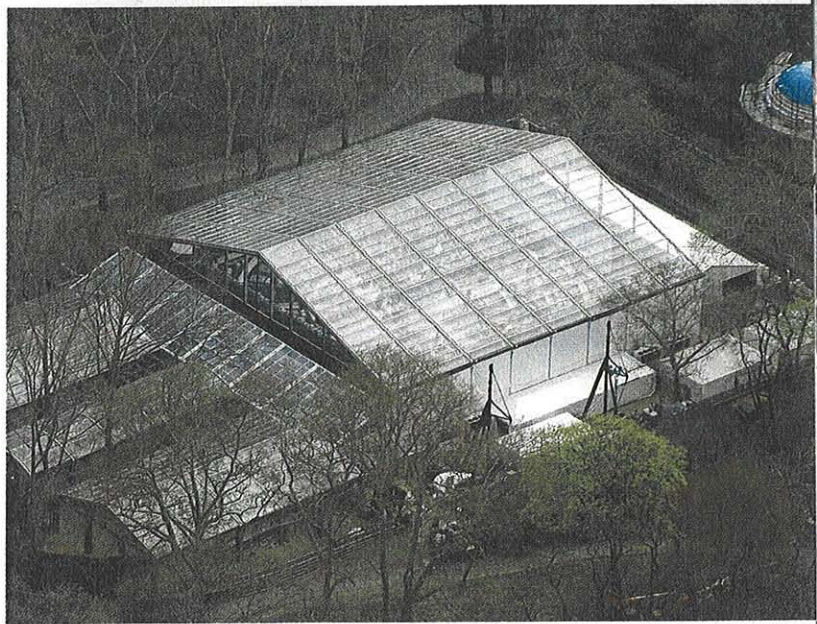
OUTSTANDING ACHIEVEMENT AWARD

Regal Tent Productions Ltd.

Stoney Creek, Ontario, Canada

Regal Tent created and installed the tents for the celebration launch of 150 H&M outlet stores in North America; including a cocktail party, fashion show, dinner, and musical performance for 1200 guests in New York City's Central Park. The 40-by-40-meter clearspan main structure had 8-meter-high legs with tiered seating for the fashion show and musical performance. Working in Central Park turned out to be more difficult than expected. The Central Park Conservancy was on site 24/7 and permission was required before any part of the grounds could be altered. Regal worked around the clock for the first 48 hours to ensure an on-time schedule for Regal and the other vendors.

FABRIC PVC from Trican Corp.



OUTSTANDING ACHIEVEMENT AWARD

Loane Brothers Inc.

Baltimore, Md., U.S.A.

Loane Brothers installed a tent at a private home for a bar mitzvah on an elevated subfloor in Owings Mills, near Baltimore, Md. The purpose was to provide a party space for 200 guests over a steeply sloping backyard with several trees. The client was particularly concerned about the trees and that minimal limbs would be cut. The trees were enclosed by the tent and some of their branches stuck out of the tent. The client was also concerned about rain protection and water leaks, particularly at the holes where the trees were protruding from the tent. There was no leakage and the tent performed well.

FABRIC By John Boyle & Co. Inc. and Ascot Prod. Inc. DBA Robeco

FABRICATION Anchor Industries and Loane Brothers Inc.

SUBCONTRACTOR B&K

